

*H. d. Comment.*

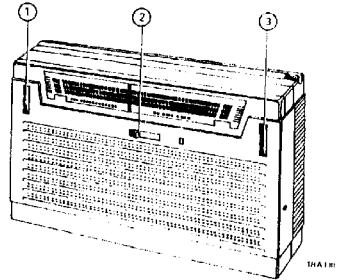
**PHILIPS**

*Service*

Ned. Ver. v. Historie v/d Radio

**RADIO**

**L1X25T/00D/00W/00X**



Controls

Volume control + on-off switch | 1  
Wave range switch | 2  
Tuning | 3

Bediening

Volumeregelaar + batterijschak. | 1  
Golfgebiedschakelaar | 2  
Afstemming | 3

Bedienung

Lautstärkeregl. + Batterieschalter | 1  
Wellenbereichschalter | 2  
Abstimmung | 3

Commandes

Rég. d'intensité + comm. de batterie | 1  
Comm. de gammes | 2  
Syntonisation | 3

Mandos

Reg. de volumen + comm. de pila | 1  
Comm. de márgenes | 2  
Sintonía | 3

Specification

Loudspeaker AD 3207 SZ (Z = 8 Ω)  
I.F. 452 kc/s  
Battery 6 V (4 x 1.5 V)  
Consumption (without signal) 7 - 9 mA  
Output 180 mW  
Dimensions 145x88.5x31 mm

Specificatie

Luidspreker  
M.F. Batterij  
Verbruik (zonder signaal)  
Uitgangsvermogen  
Afmetingen

Spzifikation

Lautsprecher  
Z.F. Batterie  
Verbrauch (ohne signal)  
Ausgangleistung  
Abmessungen

Specification

Haut-parleur  
F.I. Batterie  
Consommation (sans signal)  
Puissance  
Dimensions

Especificación

Altavoz  
F.I. Batería  
Consumo (sin señal)  
Potencia de salida  
Dimensiones

Wave ranges - Golfgebieden - Wellenbereiche - Gammes d'ondes - Márgenes de ondas

M.W. - M.G. - MW - P.O. - O.M. : 580 - 18.75 m { 517 - 1610 kc/s }  
S.W.1 - K.G.1 - KW1 - O.C.1 - O.C.1 : 65.2 - 35.2 m { 4.6 - 8.5 Mc/s }  
S.W.2 - K.G.2 - KW2 - O.C.2 - O.C.2 : 31.6 - 16.6 m { 9.5 - 18 Mc/s }

Transistors

TS1 - AP126  
TS2, 3 - AP127  
TS4 - AC126  
TS5 - AC125  
TS6 } - AC 132/127 ✓  
TS7 }

PHILIPS STANDARD PARTS ARE RECOMMENDED FOR SATISFACTORY REPAIRS

IN PHILIPS APPARATEN BEHOEVEN PHILIPS STANDAARDONDERDELEN

FUER STANDARDTEILE SIEHE UNSEREN KATALOG

REPARER AVEC PIÉCES DÉTACHÉES PHILIPS

APARATOS PHILIPS-REPARADOS PHILIPS

SERVICE INFORMATION									
---------------------	--	--	--	--	--	--	--	--	--

Copyright Central Service Division N.V. PHILIPS' GLOEILAMPENFABRIEKEN, Eindhoven

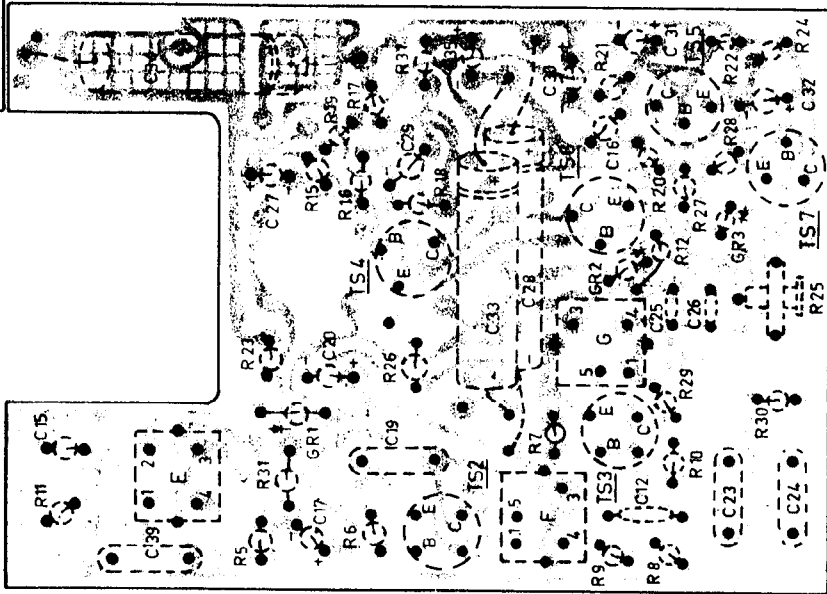
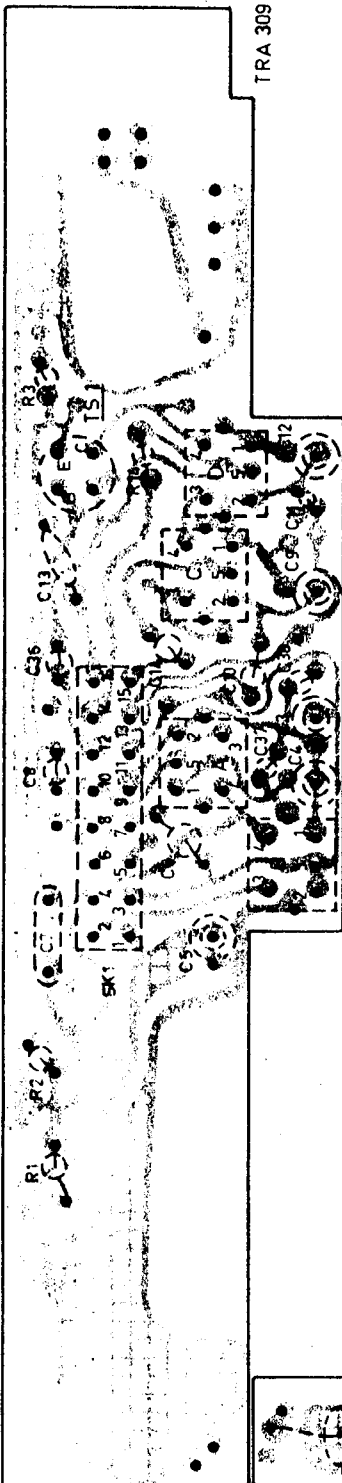
Confidential information for Philips Service Dealers

95 730 52.1.50

SV/PC

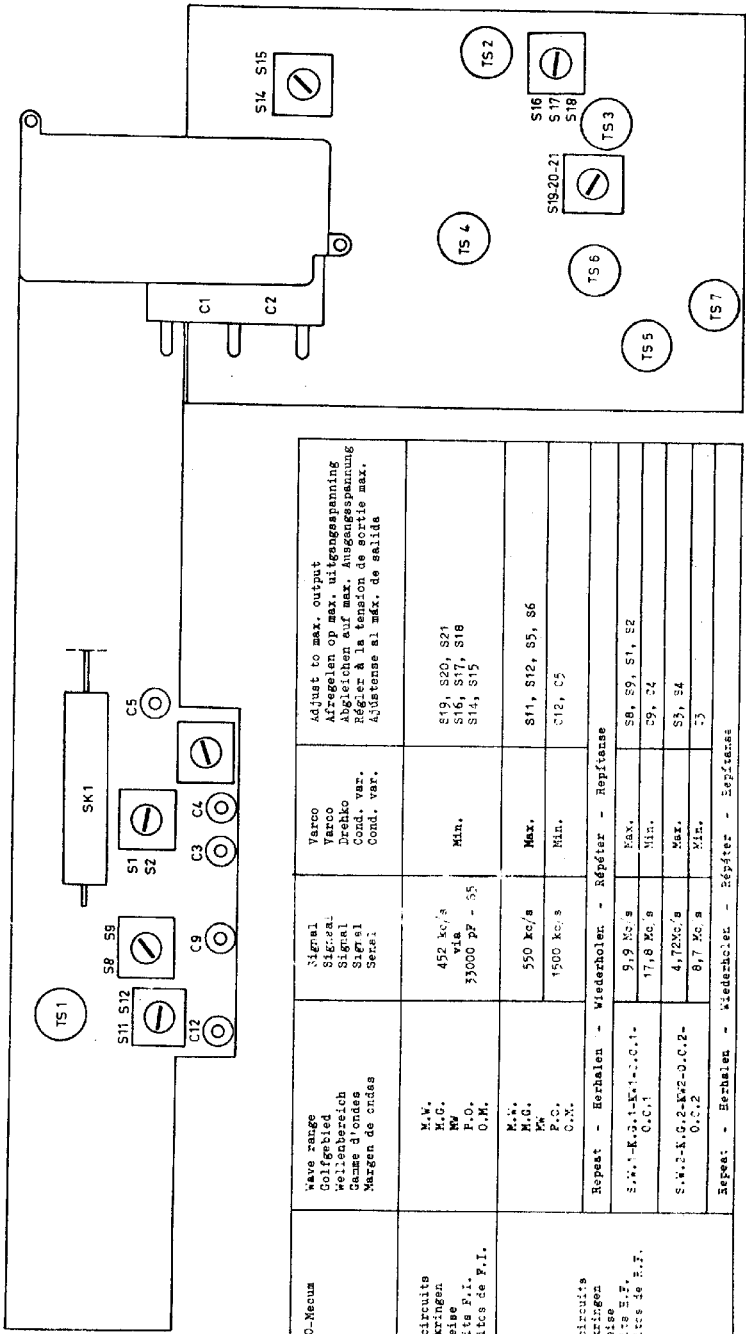
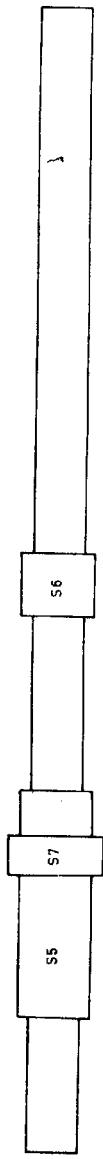
Printed in Holland

TRA 309



1





Serv.-O-Menus	Wave range Colifreud Sichtbar Wellenbereich Visible Came d'ondes Margen de ondas	Margel Sichtbar Sichtbar Sichtbar Sichtbar Sichtbar	Varco Varco Trekko Trekko Const. var. Const. var.	Adjust to max. output Ajuster en max. uitgangsspanning Ajustieren auf max. Ausgangsspannung Ajuster a la tension de sortie max. Ajuste en el max. de salida
I. P. circuits M.F.-kreizen V.F.-kreise Circuits P.I. Circuitos de P.I.	M.W. M.G. M.G. P.O. O.M.	452 kc/s 1.5 33000 P.F. - 95	Min. Max.	S19, S20, S21 S16, S17, S18 S14, S15
R.F. circuits H.F.-kreizen H.F.-kreise Circuits H.F. Circuitos de R.F.	M.W. M.G. M.G. P.C.C. O.M.	550 kc/s 1500 kc/s	Min. Max.	S11, S12, S5, S6 C12, C5
	Repeat - Repetieren - Wiederholen - Repetir - Repetirse	Repeat - Repetieren - Wiederholen - Repetir - Repetirse	Max. Min.	S8, S9, S1, S2 S9, S4
S.W. 2-K.G. 2-K.V2-O.C.2. O.C.2	S.W. 2-K.G. 2-K.V1-O.C.1. O.C.1	9,9 Mc/s 17,6 Mc/s	Max. Min.	S3, S4 S3, S4
	Repeat - Repetieren - Wiederholen - Repetir - Repetirse	Repeat - Repetieren - Wiederholen - Repetir - Repetirse	Min.	S3

# PHILIPS *Service*

## INFORMATION

### RADIO

22-11-1965

L1X25T

Ba 881



In the above apparatus, a mu-metal bushing has been fitted around coil S8, 9, 10 (code number A3 329 41).  
This modification has been effected to prevent oscillation.

-----  
In bovengenoemde apparaat is een mumetalen busje aangebracht om spoel S8, 9, 10 (codenummer A3 329 41).  
Deze wijziging is ingevoerd om oscillaties te vermijden.

-----  
Dans l'appareils susmentionné une douille en mu-métal a été appliquée autour de la bobine S8, 9, 10 (code A3 329 41).  
Cette modification a été apportée pour éviter les oscillations.

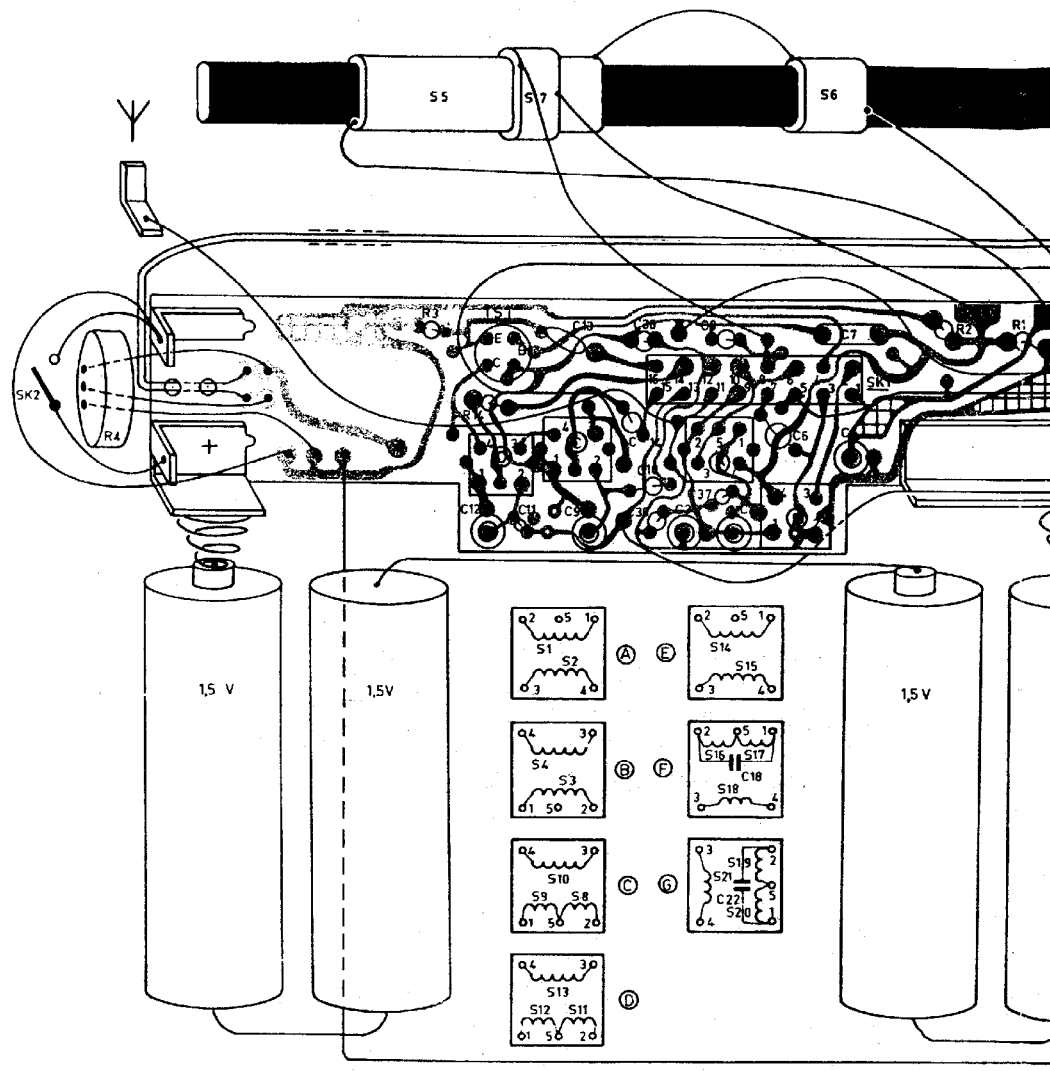
-----  
In obengenanntem Empfänger ist eine mumetallene Platte um Spule S8, 9, 10 (Kodenummer A3 329 41) angebracht. Diese Aenderung wurde durchgeführt, um Selbstschwingen zu vermeiden.

-----  
En el receptor arriba indicado fué montada una placa de mumetal alrededor de la bobina S8, 9, 10 (no. de código A3 329 41). Esta modificación fué introducida para evitar oscilaciones.

CENTRAL SERVICE  
*Th. Gijm*

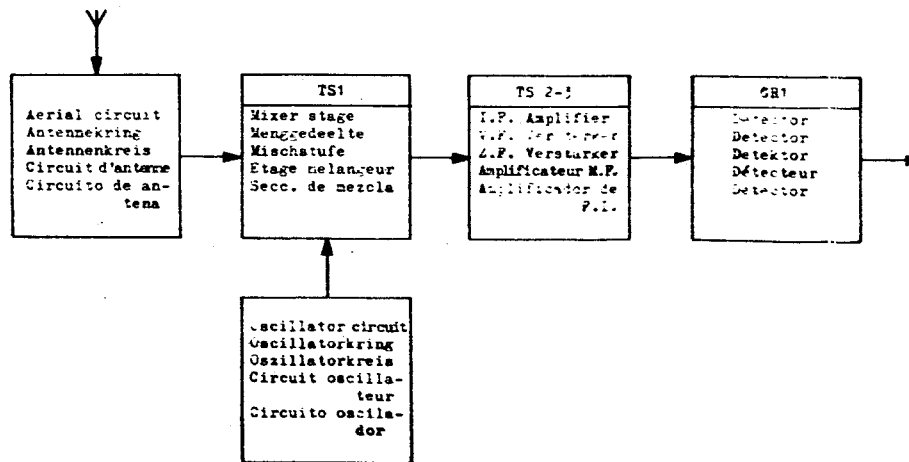
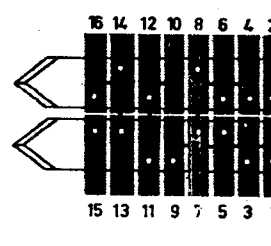
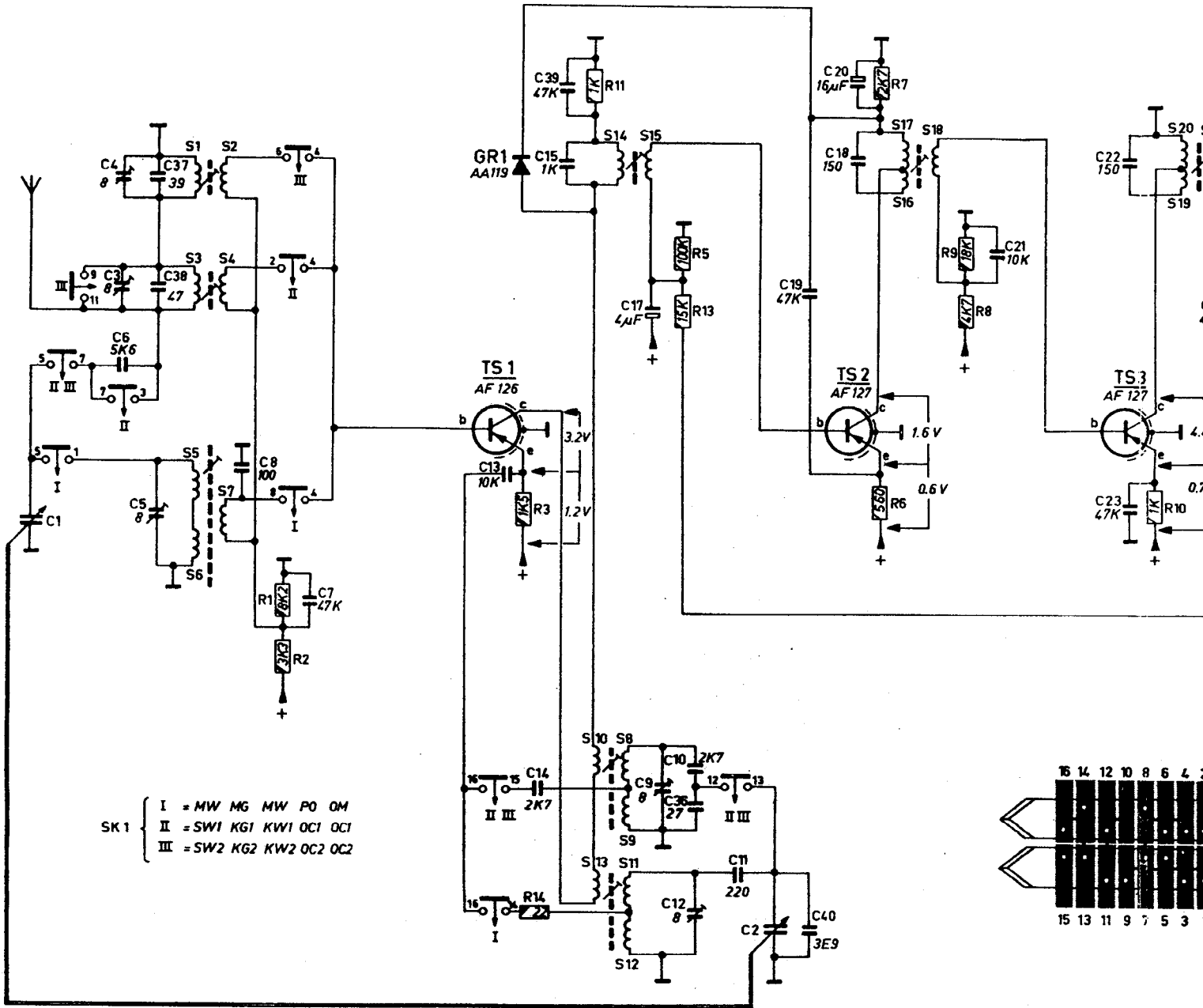
JFK/JD

C		12.11	13.9	36.14.10	38.3.8.37.4.6.18.19	7.5
R	4	3	14			2 1



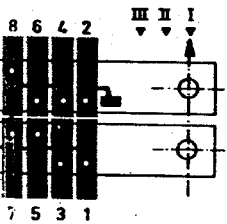
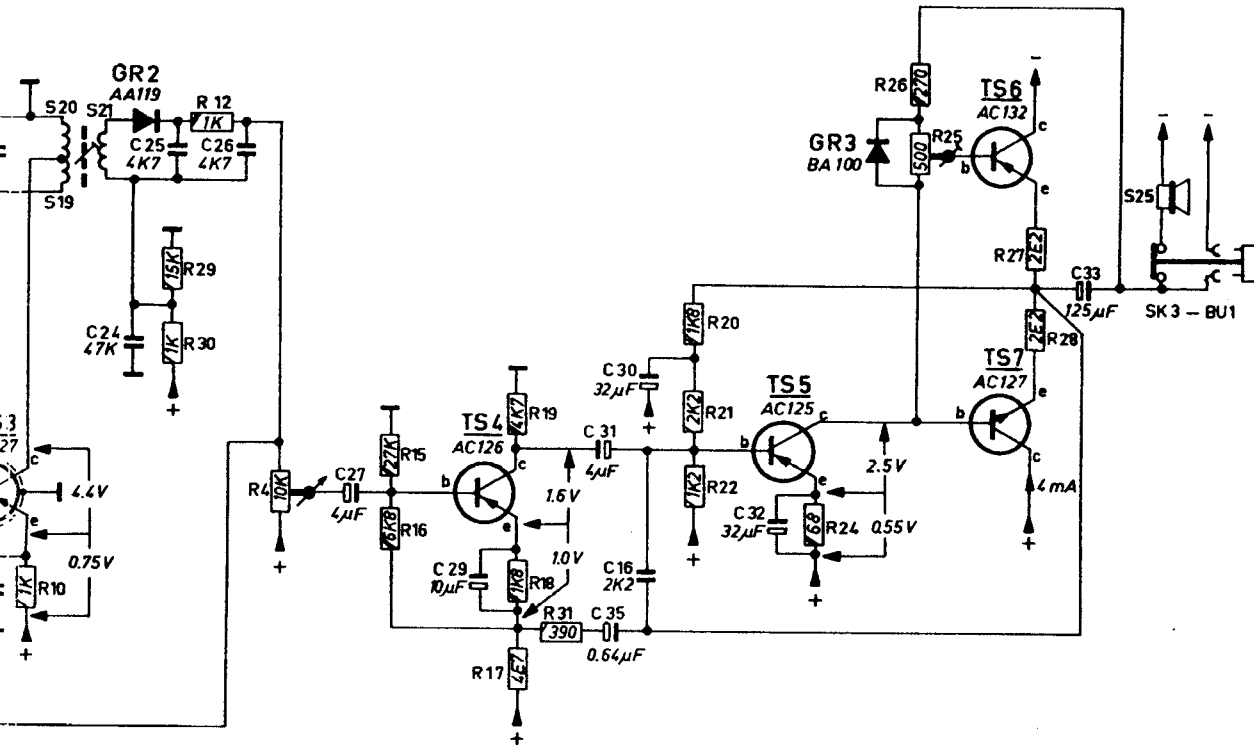


S	6.5.3.1	2.4.7		13. 10. 14	15. 8. 9. 11. 12	16. 17. 18					
C	1	6.34.37.38.5	8	7	13.14	15.39	9.17.12. 36.10. 11. 2. 40	19	18.20	21	23.22
R			2.1		14.3	11	13.5		6.7	8.9	10

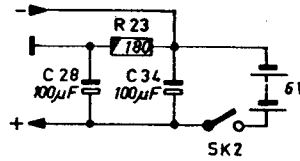
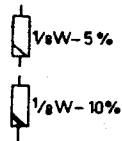




22	24	25	26	27	29	35.31	16.30	32	28	34	33
10	30.29	12	4	16.15	17.18.19.31	22.21.20	24	25.26	23.28.27		

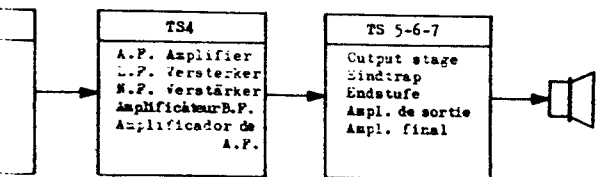


SK1



SK2

TRA 307



R19916